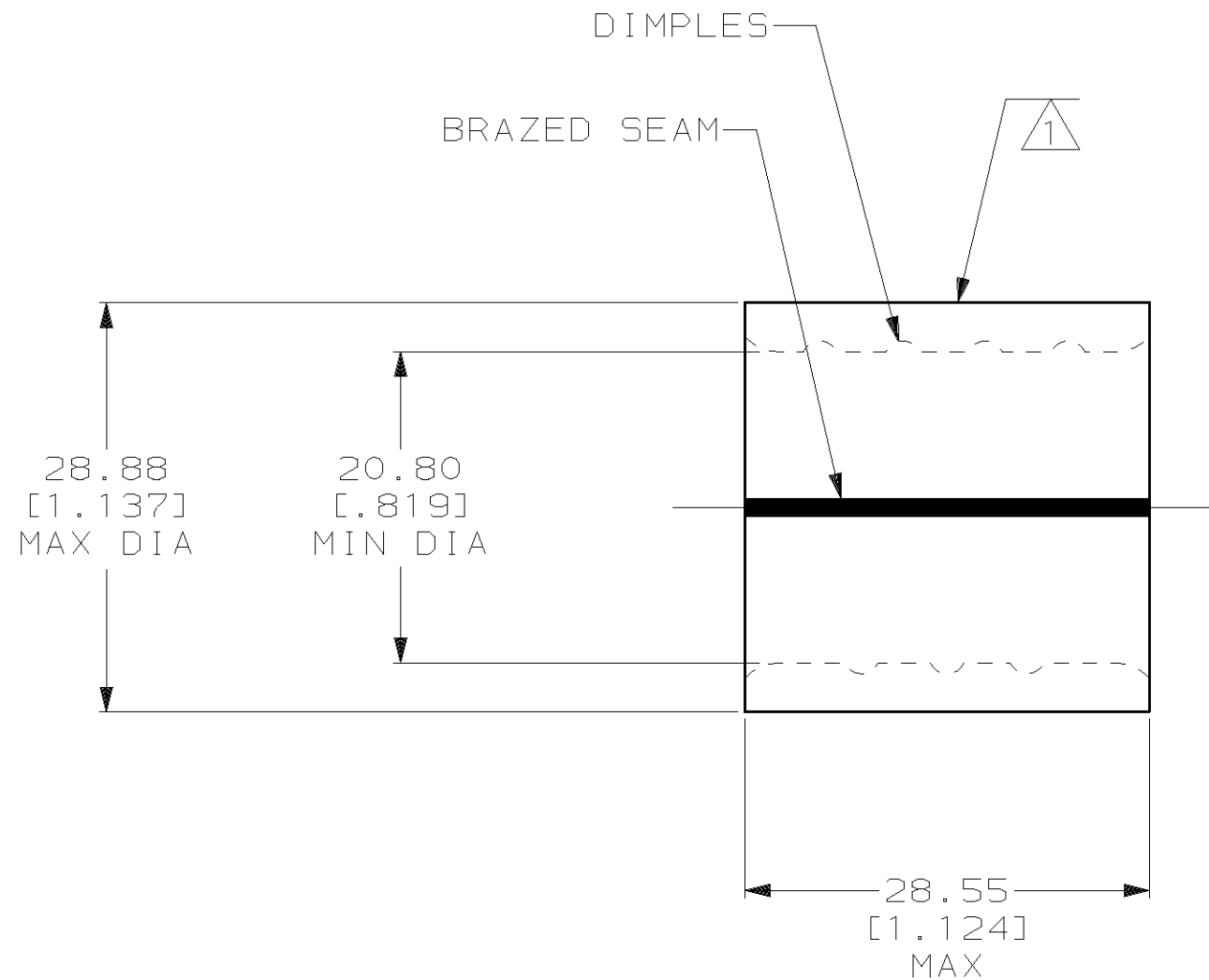


THIS DRAWING IS UNPUBLISHED. RELEASED FOR PUBLICATION, 19 .
 © COPYRIGHT 19 BY AMP INCORPORATED. ALL INTERNATIONAL RIGHTS RESERVED.

| LOC | DIST | P | F | ZONE | LTR | DESCRIPTION | DATE | APPD |
|-----|------|---|---|------|-----|----------------------|---------|-------|
| G | 14 | | | | C | REV PER 063A-0435-02 | 30SEP02 | JR MS |



| | |
|----------------------------------|----------------------------------|
| AMP WIRE RANGE | UL E13288 Listed |
| 300-350 MCM SOLID OR STRANDED | 300-350 MCM SOLID OR STRANDED |
| SP LR7189 Certified | MILITARY P/N AND CLASS |
| 300-350 MCM SOLID OR STRANDED | NOT APPLICABLE |

- ① STAMP AMP W* 300-350 MCM APPROX AS SHOWN
- 2 MATERIAL THK: 3.45^{±0.10} [.136^{±.004}]
- 3 STAMP FOR MANUFACTURING LOCATION OR CODE PERMISSIBLE.

AMP INCORPORATED
CUSTOMER SERVICE SYSTEMS

FOR ADDITIONAL PRODUCT INFORMATION OR COPIES OF DRAWINGS AND TECHNICAL DOCUMENTS
 PRODUCT INFORMATION CENTER
 1-800-522-6752

FOR APPLICATION TOOLING INFORMATION
 TOOLING ASSISTANCE CENTER
 1-800-722-1111

FOR ORDER ENTRY
 1-800-526-5142

MAX RECOMMENDED OPERATING TEMPERATURE:
 170°C MAX

VOLTAGE RATING:
 NOT APPLICABLE

CIRCULAR MIL AREA:
 152.0-192.5mm² [300-380] MCM
 SOLID OR STRANDED

THIS DRAWING IS A CONTROLLED DOCUMENT FOR AMP INCORPORATED. IT IS SUBJECT TO CHANGE AND THE CONTROLLING ENGINEERING ORGANIZATION SHOULD BE CONTACTED FOR THE LATEST REVISION.

DO NOT SCALE PRINT. UNLESS SPECIFIED DIMENSIONS IN mm [INCHES]
 TOLERANCES ON:
 2 PLC DEC ± 0.20 [.008]
 3 PLC DEC ± -
 ANGLES ± -

MATERIAL
 COPPER PER ASTM B-152 ANNEALED

FINISH
 TIN PLATE
 0.00254 [.000100] MIN THK PER MIL-T-10727

DR 5/6/93
 DK SCHRUM

CHK 5/14/93
 AJ KAUFMAN

APPD 5/14/93
 RE ROSER

APPD 5/14/93
 CR RHOADS

PRODUCT SPEC -

APPLICATION SPEC -

WEIGHT -

AMP AMP Incorporated
 Harrisburg, PA 17105-3608

NAME
 SPLICE, PARALLEL, SOLISTRAND,
 WIRE SIZE: 300-350 MCM

| | | |
|-------|-----------|------------|
| SIZE | CAGE CODE | DRAWING NO |
| B | 00779 | C-322276 |
| SCALE | SHEET | |
| 2:1 | 1 OF 1 | |

322276
 PART NO